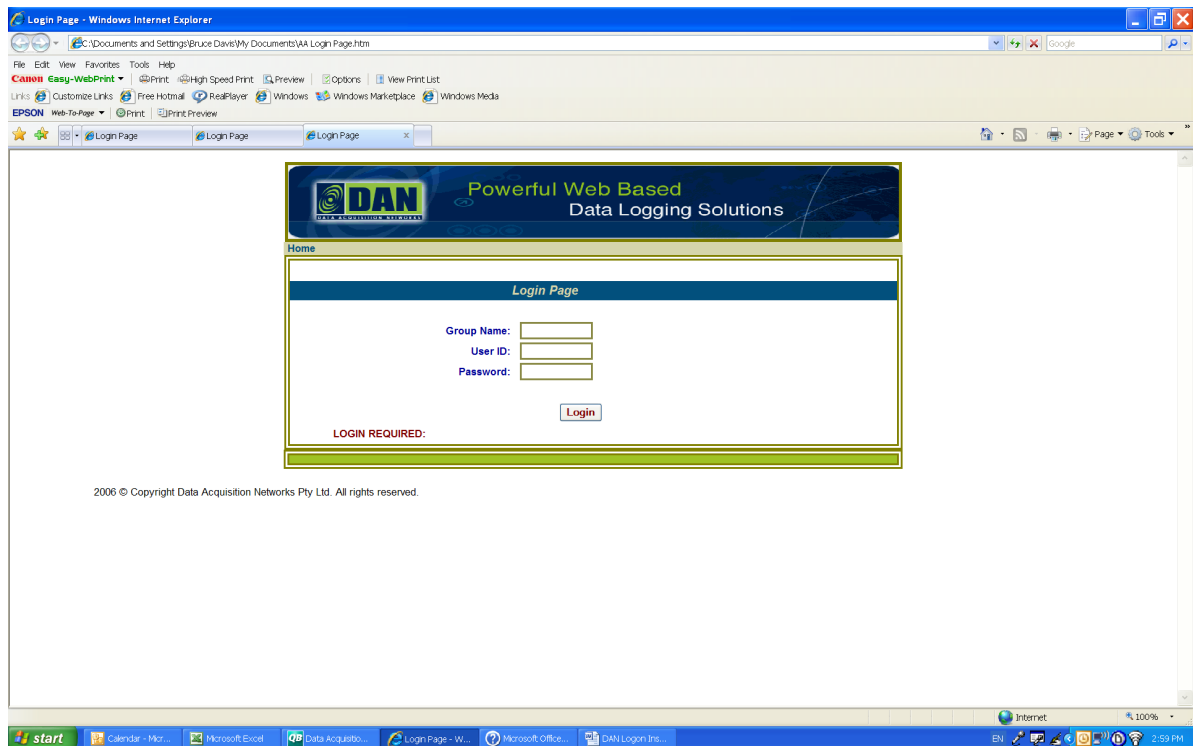


DAN – Accessing Your System

1. Open your internet browser
2. Type www.danmonitoring.com in the address bar and hit GO or press Enter.
You will be sent to the DAN home page below;

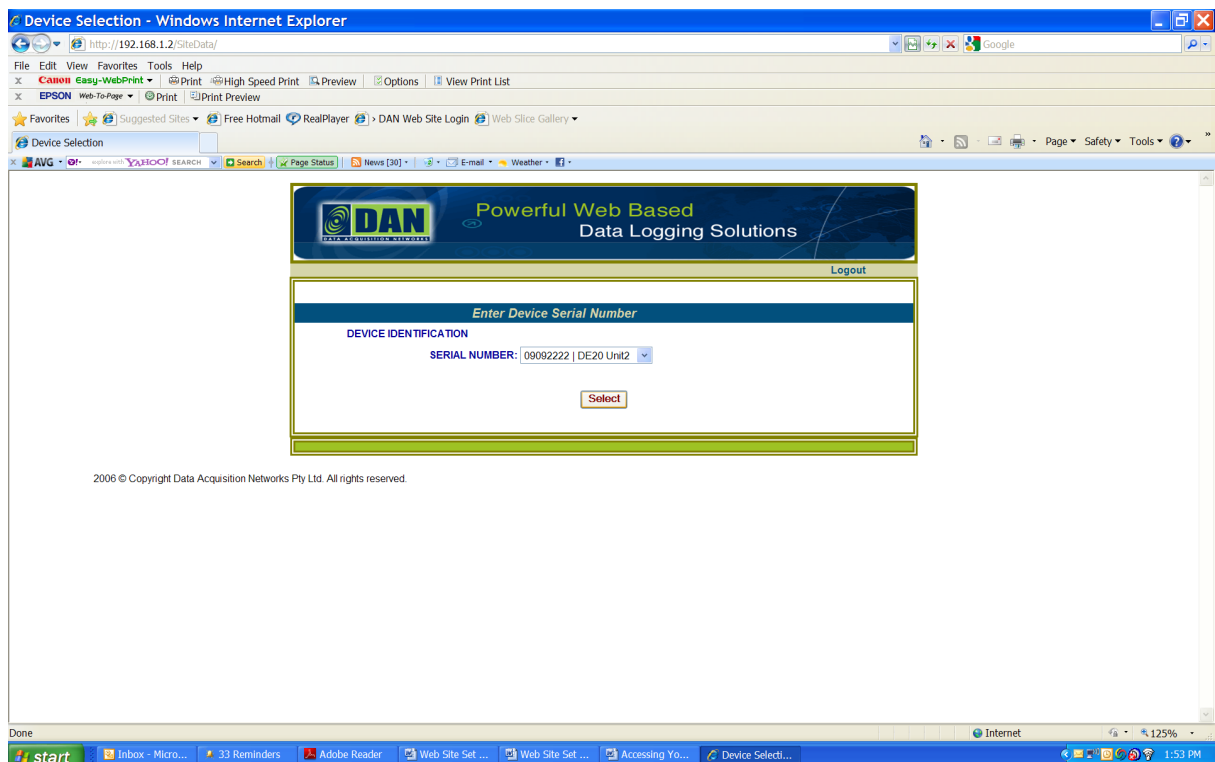


3. Click on “Login New” button found in the top right hand corner and you will be sent to the site with a screen as below;

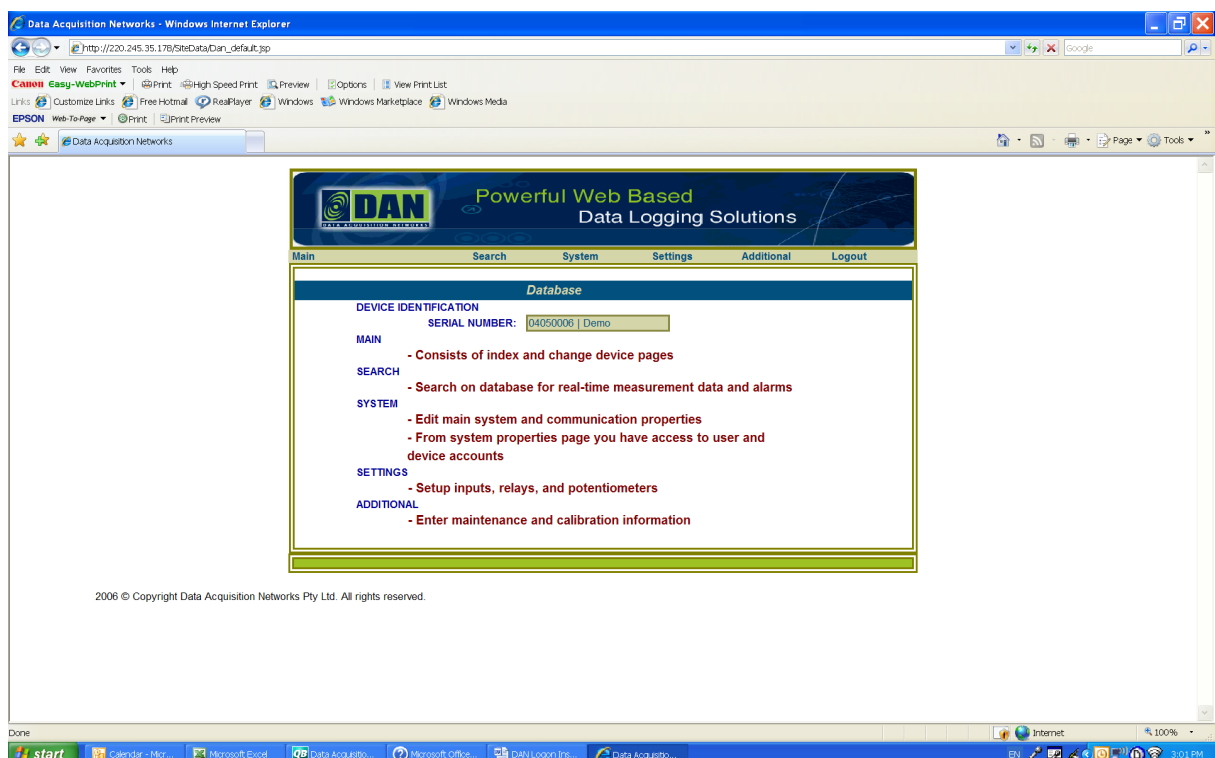


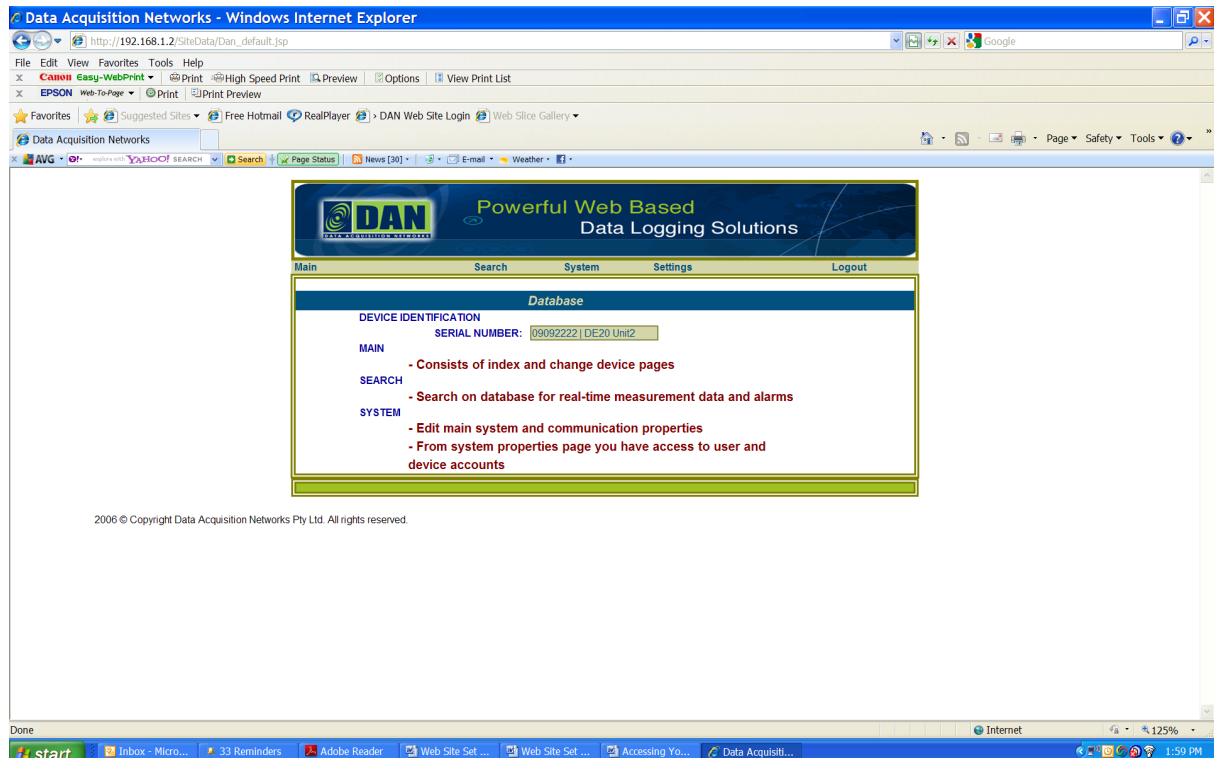
4. Enter the “Group Name” provided, then enter the “User ID” provided in the respective windows.

5. Enter your “Password”. Click the “Login” Icon. You will be directed to a new page with the screen below;



6. Select the drop down arrow and depending on the system you have highlight the option that you wish to enter. If you have a single system, go to Step 7.
7. Hit the “Select” Icon and you will be directed to a new page with either of the screens below;





8. You have now logged on and may proceed to set up/use your system.
9. For detailed instructions relating to the set up, operation and maintenance of your system, refer to the DAN website

<http://www.danmonitoring.com/library/web-site-set-up-instructions>

and view the respective PDF's relating to your model/application