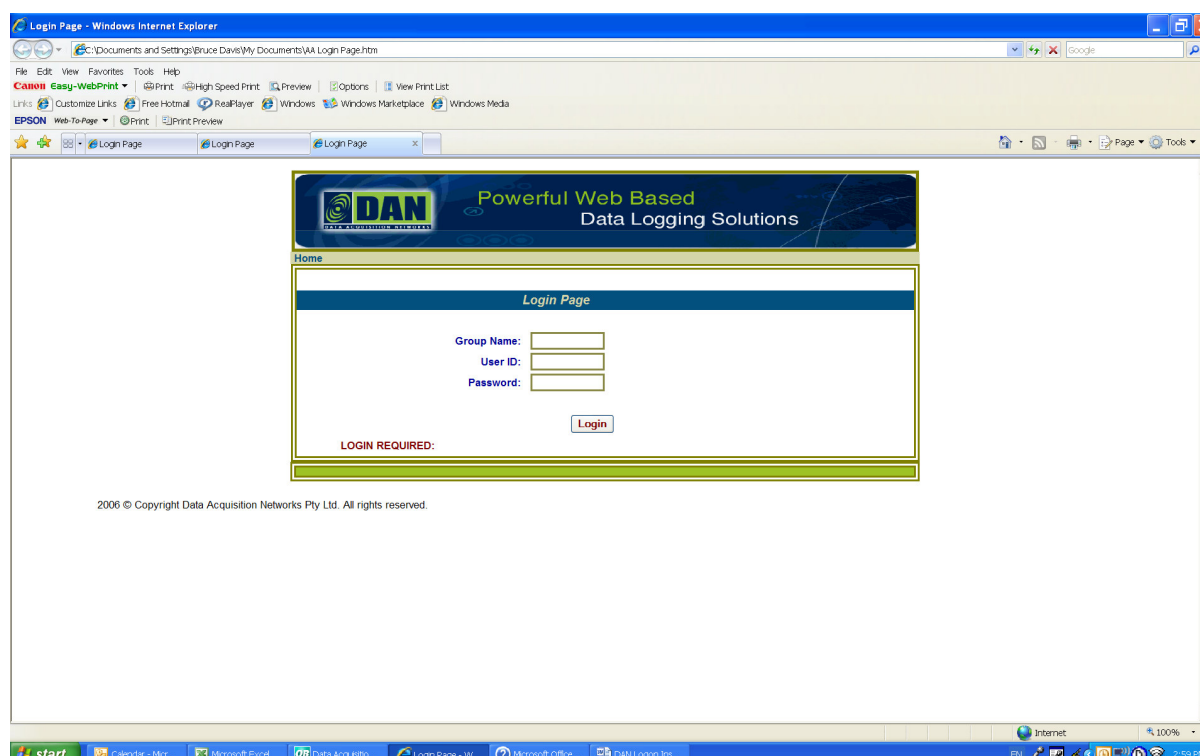


## DAN – Accessing Your System – DM01

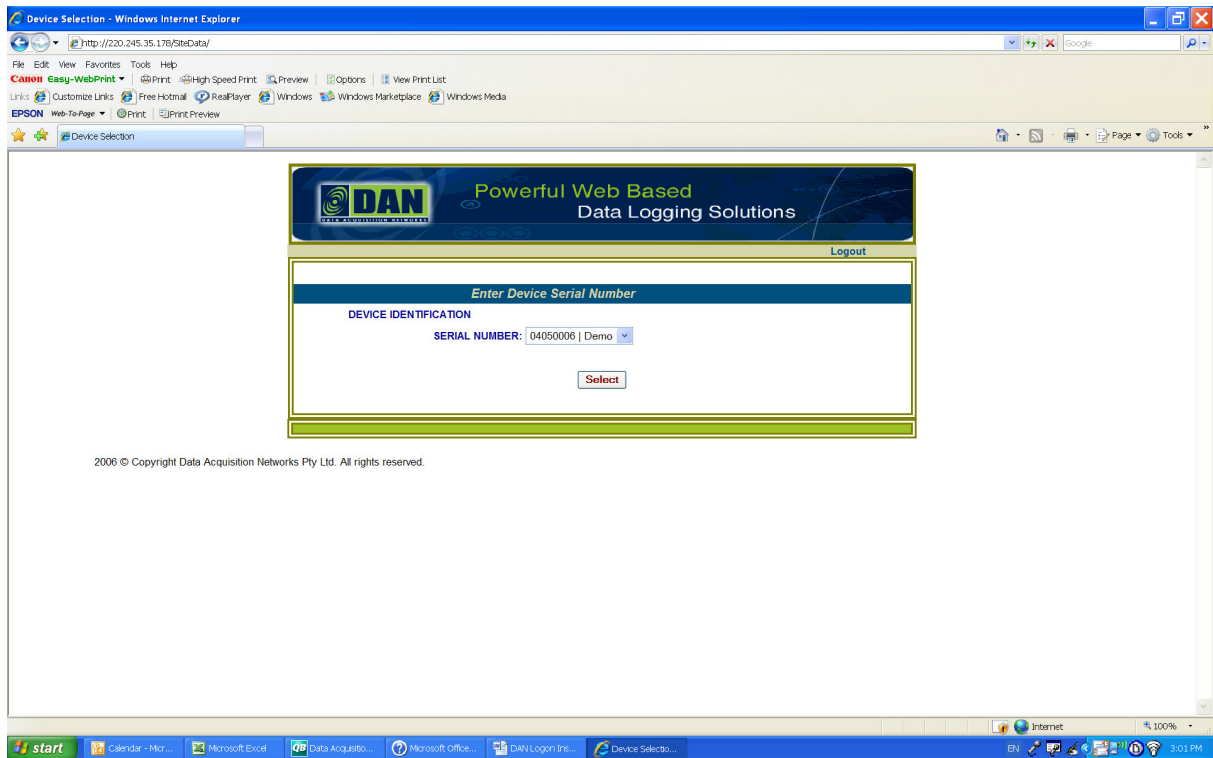
1. Open your internet browser
2. Type [www.danmonitoring.com](http://www.danmonitoring.com) in the address bar and hit GO or press Enter.  
You will be sent to site below;



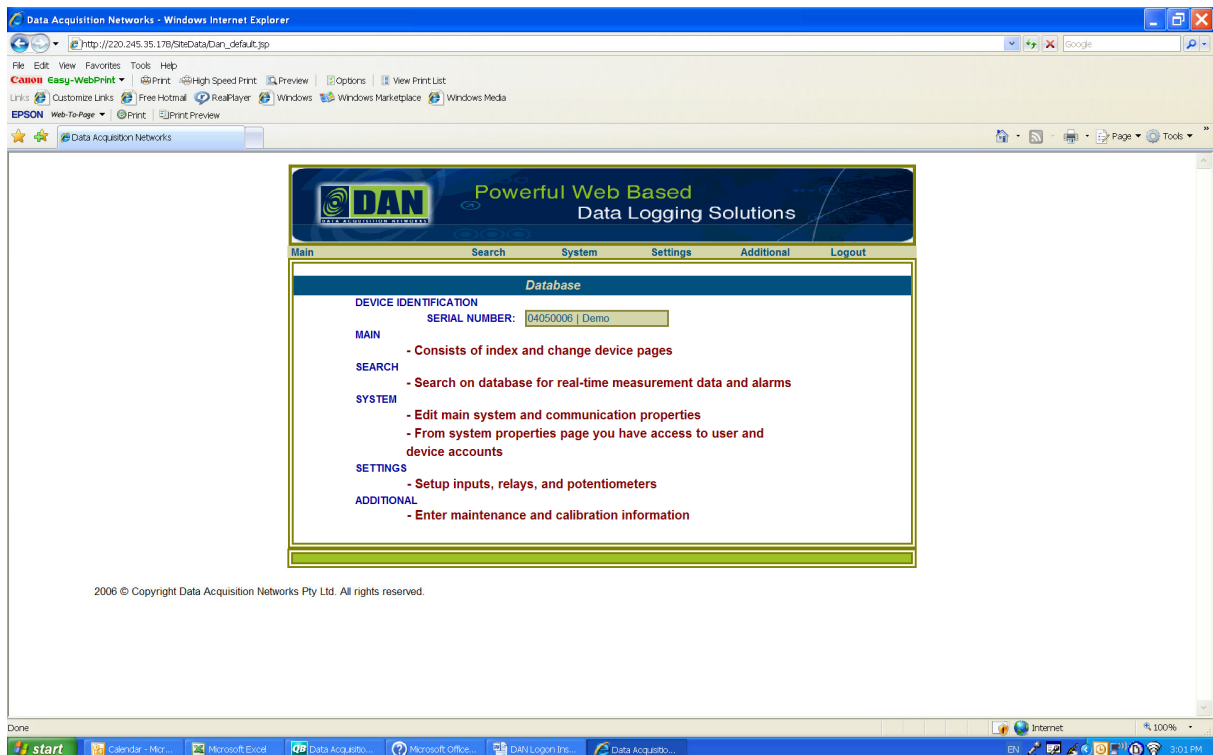
3. Click on "Login" button found in the top right hand corner and you will be sent to the site with a screen as below;



4. Enter the "Group Name" provided, then enter the "User ID" provided in the respective windows.
5. Enter your "Password". Click the "Login" Icon. You will be directed to a new page with the screen below;



6. Should there be more than one DM01 in your Group select the drop down arrow and highlight the DM01 you wish to enter;
7. Hit the "Select" Icon and you will be directed to a new page with the screen below;



8. You have now logged on and may proceed to set up your system and search for data.
9. For detailed instructions relating to the operation of the system, refer to the DAN website <http://www.danmonitoring.com/library/installation> and view the PDF

**“The DAN Website Setup Operation & Maintenance Instructions – DM01”**

10. For detailed instructions relating to the ADMINISTRATOR, refer to the DAN website <http://www.danmonitoring.com/library/installation> and view the PDF

**“The DAN Website Security & Administration Instructions”**