

## DAN – Accessing Your System – DE20

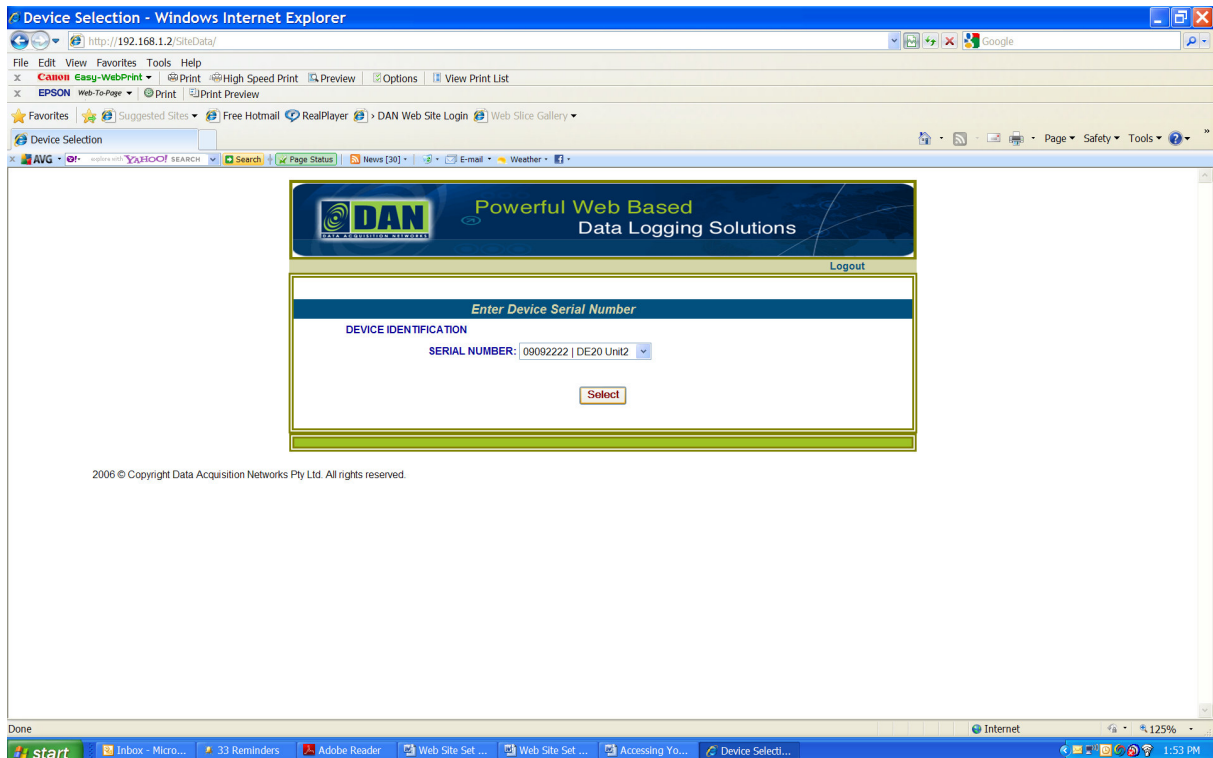
1. Open your internet browser
2. Type [www.danmonitoring.com](http://www.danmonitoring.com) in the address bar and hit GO or press Enter. You will be sent to the DAN home page below;

The screenshot shows the DAN website home page in Microsoft Internet Explorer. The browser title is "Cannot find server - Microsoft Internet Explorer". The address bar shows "http://www.danmonitoring.com/". The page features a navigation menu on the left with links for Home, About Us, Applications, Info Request, Library, Distributors, FAQ's, and Contact. The main content area includes a header with the DAN logo and the text "Powerful Web Based Data Logging Solutions". Below the header, there is a list of features and benefits: "DAN SENTRY is a unique protector and defender of your process or installation and a lot more too", "LOW COST, SECURE, EASY TO USE, RELIABLE", "ALARM messages are sent to any or all of 5 mobile phones and 5 email addresses.", "MONITOR instant data sent to your mobile phone on request.", "TREND the measurements. All data is date and time stamped, tabulated and graphed in our secure DATA VAULT.", "PROTECT your business. DAN SENTRY will take immediate corrective action on site in response to alarm conditions.", "SECURE REMOTE ACCESS of your data from any web-enabled computer.", "NO ADDITIONAL SERVERS ON SITE. DAN provides mirrored servers in two locations for total reliability and security. You don't need to worry about maintaining a secure server with UPS and 24/7 technical backup.", and "NO SOFTWARE TO BUY OR MAINTAIN. DAN provides you with full access to our own easy to use software via your web browser." A diagram on the right illustrates the system architecture, showing "What you need to monitor" connected to the "DAN DATA CONTROL CENTRE", which is connected to "Local Control". The diagram also shows "Mobile access sms alarms & instant data" and "Website access from any PC" connected to the "DAN DATA CONTROL CENTRE". The footer of the page includes "2006 © Copyright Data Acquisition Networks Pty Ltd. All rights reserved." and "Designed by AnAttack".

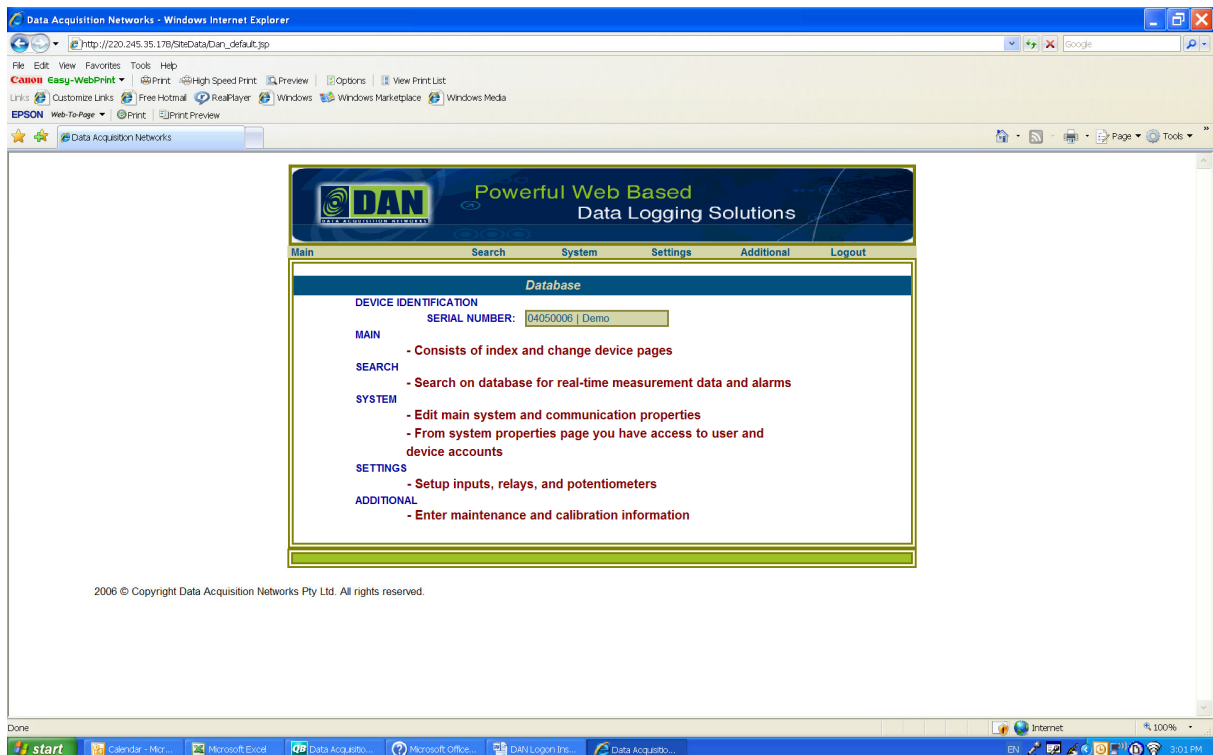
3. Click on "Login" button found in the top right hand corner and you will be sent to the site with a screen as below;

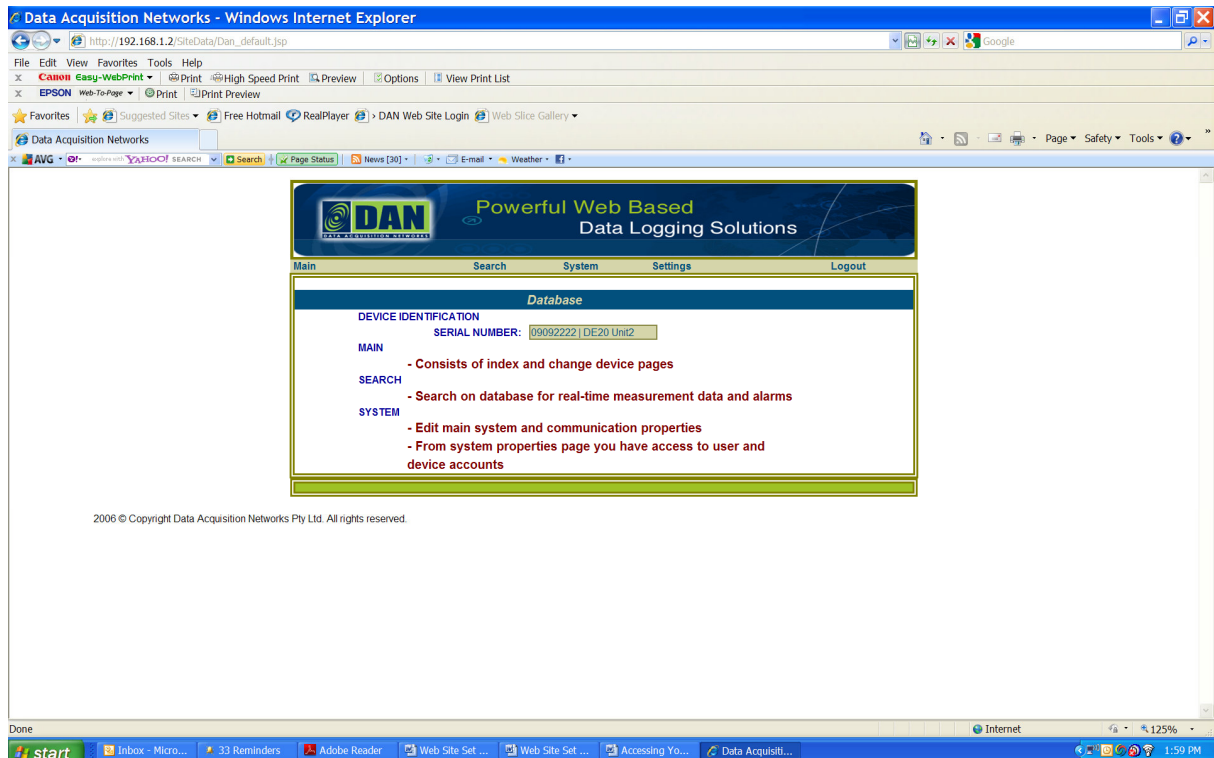
The screenshot shows the DAN website login page in Windows Internet Explorer. The browser title is "Login Page - Windows Internet Explorer". The address bar shows "C:\Documents and Settings\Bruce Davis\My Documents\AA Login Page.htm". The page features a navigation menu on the left with links for Home, Applications, Info Request, Library, Distributors, FAQ's, and Contact. The main content area includes a header with the DAN logo and the text "Powerful Web Based Data Logging Solutions". Below the header, there is a login form with the following fields: "Group Name:", "User ID:", and "Password:". A "Login" button is located below the password field. The text "LOGIN REQUIRED:" is displayed below the login form. The footer of the page includes "2006 © Copyright Data Acquisition Networks Pty Ltd. All rights reserved." and "Designed by AnAttack".

4. Enter the "Group Name" provided, then enter the "User ID" provided in the respective windows.
5. Enter your "Password". Click the "Login" Icon. You will be directed to a new page with the screen below;



6. Select the drop down arrow and highlight either the manual or automatic data entry side of the DE20 that you wish to enter;
7. Hit the "Select" Icon and you will be directed to a new page with either of the screens below;





8. You have now logged on and may proceed to set up your system and search for data.
9. For detailed instructions relating to the operation of the system, refer to the DAN website <http://www.danmonitoring.com/library/installation> and view the PDF's

**“The DAN Website Setup Operation & Maintenance Instructions – DE20 Manual Data Entry”**

**And**

**“The DAN Website Setup Operation & Maintenance Instructions – DE20 Automatic Data Entry”**

10. For detailed instructions relating to the ADMINISTRATOR, refer to the DAN website <http://www.danmonitoring.com/library/installation> and view the PDF

**“The DAN Website Security & Administration Instructions”**